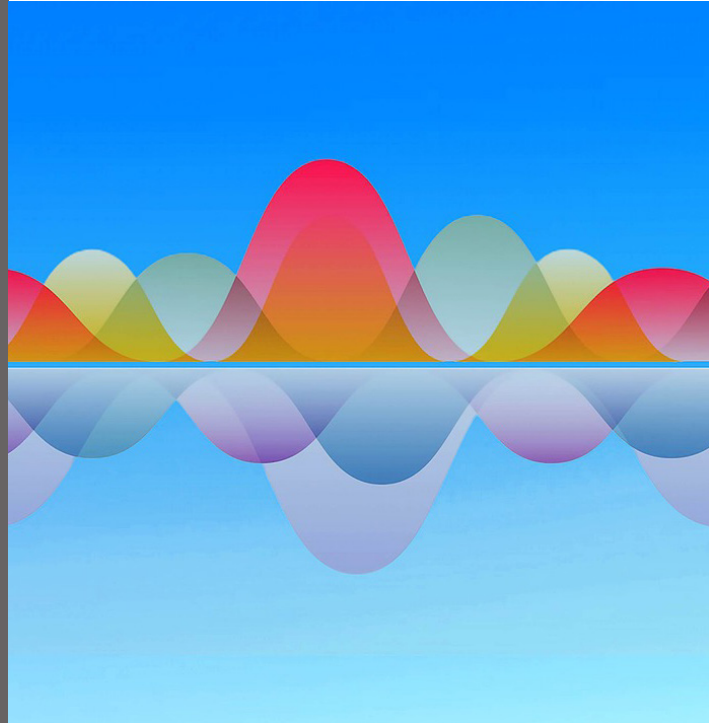


MIT CSAIL INFOLAB



The Infolab research group investigates language in different contexts: from how it is learned, to how it is grounded in visual perception, all the way to how machines can readily interact with humans.



Boris Katz

Principal Research Scientist

Telephone: 617-253-6032

Email: boris@csail.mit.edu

CSAIL / MIT

Website:

groups.csail.mit.edu/infolab

Research Group Address:

Infolab is located in the Ray and Maria Stata Center,
Room 32-G430 at MIT.

Research Vision

Our mission is to understand human language by modeling language learning, the development of language, and how knowledge is transferred between languages. To enable communication with machines, we investigate how perception interacts with language and how robots can be controlled.

Areas of Research

- Artificial intelligence
- Machine learning
- Human-computer interaction

Research Activities

- START natural language system
- Detailed interpretation of object images
- Semantic parsing using vision
- Inferring “Theory of Mind” with vision and language
- Generating plans for agents using video and language
- Language learning from a computational perspective

Industry Applications

- Big data
- Education
- Entertainment
- Internet of things

“AI research needs to build on ideas from developmental psychology, cognitive science, and neuroscience, and AI models ought to reflect what is already known about how humans learn and understand the world.”

Boris Katz



In the News

- Infolab researchers developed a language parser to help [machines learn language more like kids do](#).
- Technical ideas from the Infolab were incorporated into IBM’s Watson system, which in 2011 [defeated the all-time human champions on the quiz show Jeopardy!](#)
- Prof. Katz, who helped invent virtual assistants, thinks we need [a new AI approach](#) to make Siri or Alexa truly smart.

Current People in the Infolab

Principal Investigator

Boris Katz

Research Scientists

Andrei Barbu
Gary Borchardt
Sue Felshin
Henry Lieberman
Xiaolan Zhou

Research Specialists/Engineers

Julian Alverio
Ravi Tejwani
Christopher Wang

Graduate Students

Emily Cheng
Henry Hu
Yen-Ling Kuo
David Mayo
Candace Ross
Aaditya Singh
Dylan Sleeper
Adam Yaari